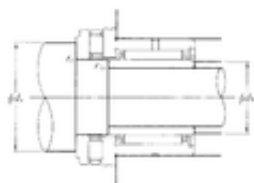


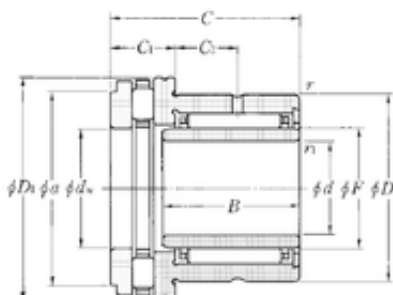


NTN Bearing Driveshaft do Brasil



40 mm x 58 mm x 20 mm NTN
NKXR45T2+IR40 x 45 x 20 complex bearings

Bearing No. NKXR45T2+IR40 x 45 x 20



NKXR45T2+IR40 x 45 x 20 Bearing 2D drawings and 3D CAD models

Bore Diameter	40 mm
Outer Diameter	65 mm
d	40 mm
d1	45 mm
F	45 mm
D	58 mm
D1	65 mm
B	20 mm
C	32 mm
ra1 max.	0,3 mm
r min.	0,6 mm
r1 min.	0,3 mm
C1	14 mm
da min.	61 mm
db min	42 mm
ra max.	0,6 mm
C2	9 mm
Weight	0,318 Kg
Dynamic load rating radial (C)	27,6 kN
Dynamic load rating axial (C)	45,5 kN
Static load rating radial (C0)	59 kN
Static load rating axial (C0)	135 kN
(Grease) Lubrication Speed	1100 r/min